

Datasheet: OI0002**Specification:**

Description: CD24 is a cell surface glycosyl-phosphatidyl-inositol (GPI)-anchored glycoprotein with wide-spread expression among both hematopoietic and non-hematopoietic cells. The human CD24 IgG₁ Fc fusion protein, comprising the first 30 amino acid of human CD24 protein (**SETTTGTSSNSSQSTNSGLAPNPTNATTK**), is produced in Chinese hamster ovary (CHO) cells and purified by ion-exchange and protein A-based affinity chromatography to homogeneity.

Molecular Mass: The recombinant CD24 IgG1 Fc migrates at approximately 80 kDa by SDS-PAGE under non-reducing condition and about 45 kDa under reducing condition (Please see the picture below).

Purify: 99.30% monomer, 0.7% aggregate, as determined by SEC HPLC.

IEF: Multiple bands at a pI range of 4.6 to 8.0 indicate the glycosylated pattern (please see the picture below).

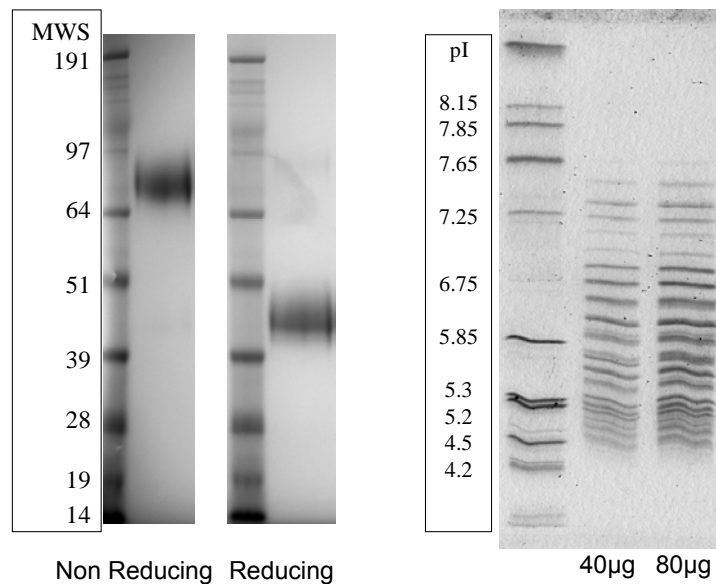
Formulation: 1x Phosphate buffered saline, pH7.2

Preservatives: None

Quantity: 0.1 mg or 0.5 mg

Storage: Storage Store at -20°C only. This product should be stored undiluted. Avoid repeated freeze-thaw cycles.

Shelf life: 18 months from the date of dispatch.

SDS-PAGE and IEF results:

Reference:

1. Chen GY, Tang J, Zheng P, Liu Y. CD24 and Siglec-10 selectively repress tissue damage-induced immune responses. *Science*, 323(5922):1722-5, 2009.
2. Motaria E, Zheng X, Sue X, Liu Y, Kvaratskhelia M, Freitas M, Wang PG. Analysis of Recombinant CD24 Glycans by MALDI-TOF-MS Reveals Prevalence of Sialyl-T Antigen. *American Journal of Biomedical Sciences*. 2009, 1:1-11.

*For research purposes only, unless otherwise specified in writing by OncoImmune Inc.

Address:

OncoImmune Inc.
333 Parkland Plaza Suite 1000
Ann Arbor, MI 48103
Tel: 734-332-4234
Fax: 734-864-5777
Email: xzheng@oncoimmune.com
Web: www.oncoimmune.com